

UPDATE

Week of April 28, 2008

CREATING A DOUBLE STANDARD

With more and more affluent parents funding shortfalls in their public schools, as recently noted in *Los Angeles Times* articles, it may be time to recognize the existence of a double standard. Historical court decisions such as *Brown v. Topeka Board of Education*, *Crawford v. LAUSD*, *Serrano v. Priest*, *Rodriguez Consent Decree*, *Williams Consent Decree*, and *Chanda Smith Consent Decree*, were all based on the need for equality in public education. Now, with some parents and communities able to raise significant amounts of money to lower class size or provide music, science and art instruction, the gap is widening between students in those affluent schools and the children from poorer communities. Is this the public education system that we want for California? Does the California State Constitution authorize this unequal education?

If the Constitution does, then the accountability standards for students need to be revised, and we need to accept the achievement gap. Why hold children to the same standard if the resources available to them are not equal? This gap has been prevalent for many years when comparing students in elite private schools with those in public schools where an annual tuition of up to \$25,000 per year can buy much more than the approximately \$5,000 per year spent on the average public school student. And, please don't initiate the argument that students from poorer families get more funds from federal and state sources. Those funds usually amount to no more than \$400 per year for each eligible student and the law requires that they supplement not supplant the general fund revenue available to all students.

If we have some students receiving up to five times more resources than their economically disadvantaged counterparts, then maybe in fairness the test standards should be five times less. Why should students from disadvantaged schools be labeled as underachieving when it is the system of funding public education that has fostered this inequity?

AAALA is anticipating the class action lawsuit on behalf of economically disadvantaged students to make the academic playing field even again. When will the ACLU or other student advocacy group address this growing inequity that is so explicit and appears to fly in the face of past court decisions? Our public school system has been rightly touted in the past as the great equalizer in American society. Evidently, expanding the gap between rich and poor in the current public education system is now the great unequalizer.

CREATING A DOUBLE STANDARD (Continued)

Either we level the public education playing field and enrich it appropriately for all students, or we change the accountability standards so that we don't continue to label economically disadvantaged students as failing when compared to their wealthier counterparts. Fair is fair. As AALA has stated in past editions of *UPDATE*, accountability and budget go hand in hand. Accountability measures, such as standardized tests, tend to label students or groups of students, and no student should be unfairly labeled as failing when it is the funding system, in large part, which has failed them. While high expectations for all students is an imperative, it is much more difficult to actually achieve if resources for quality teaching and learning are inadequate. So, if politicians want to truly close the "Achievement Gap," they must first close the "Funding Gap" and insure that no child is left behind, anything otherwise is a failed system.

AALA hopes that LAUSD Board Members and the Superintendent will recognize this failure and become proactive in addressing it. Putting a parcel tax on the ballot to create additional funding is one concrete way to do this instead of languishing and not putting forth a well-structured campaign to raise funds from corporate interests and ballot measures. Addressing this need publicly in as many forums as possible is another. Where is the District's public relations campaign to gain a greater level of sensitivity from the Governor and the Legislature? If individual parents at high and median income schools are ready and willing to give schools money, why are we not tapping this willingness in a way that helps all students? All parents want what is best for their children regardless of family income levels. Maybe, just maybe, this is our opportunity to bring not only additional resources but also local control back to our school district.

RETIREMENT CELEBRATIONS

Name	Date/Time	Location	Contact
Joseph Caldera <u>CORRECTION ON DATE</u>	Friday, <u>JUNE 13</u> , 2008 6:00 p.m.	Luminarias 3500 W. Ramona Blvd. Monterey Park	Jose Huerta 323.266.7412 jose.huerta@lausd.net
Jacqueline "Jackie" Hill	Friday, June 7, 2008 7:30 – 12:00 p.m.	Chester Washington Golf Course 1930 West 120 th Street Los Angeles	Marilyn Gavin 310.345.0758
Pam Hughes	Saturday, June 14, 2008 11:30 a.m. – 2:30 p.m.	Café Santorini 64 West Union St. Old Pasadena	Lynn Vineyard 323.422.4614
Liz Lem (formerly <u>Sullivan</u>)	Friday, June 27, 2008 4:00 p.m.	LACOE Clark Bldg., Rooms 606 AB 12830 Clark Avenue Downey	Debra Reed-Hunter 562.922.6129

NEW 2007-2008 DISTRICT ORGANIZATION CHART

ALA would like to thank Superintendent **David L. Brewer**, Senior Deputy Superintendent **Ray Cortines**, and newly assigned Chief of Staff **Jim Morris** for finally publishing a new District Organization Chart for 2007-2008. The line staff reporting is clearly understandable and the use of education titles, such as associate superintendent and senior deputy superintendent are greatly appreciated. However, there are still considerable opportunities to improve this structure prior to the 2008-2009 version. *Note: Refer to the April 4, 2008, edition on the next page.*

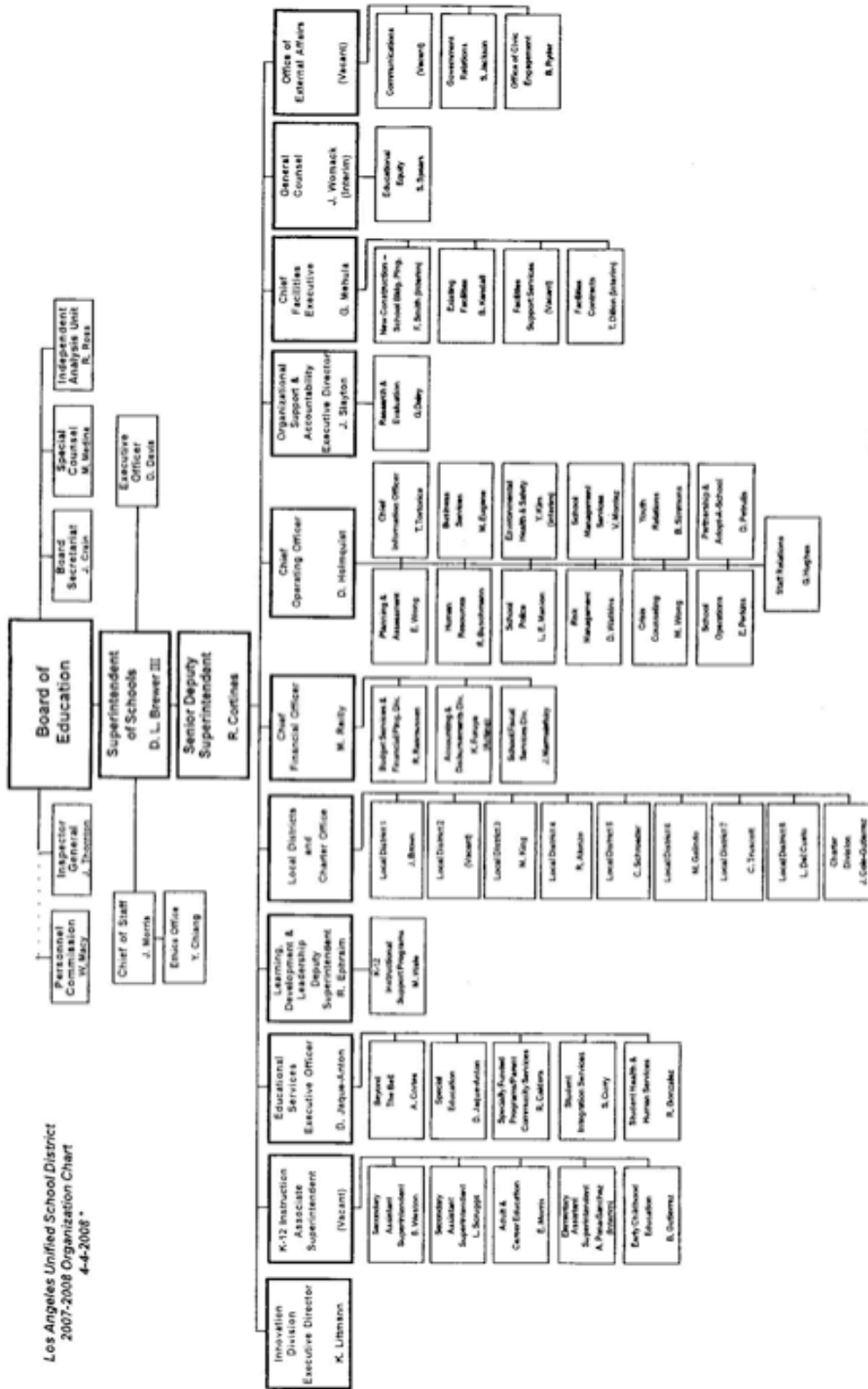
- The Charter Division should not be on a par with Local Districts. It is an office that provides support and monitoring of existing charters. A more appropriate placement would be under the Office of External Affairs.
- The Division of Adult and Career Education and the Division of Early Childhood Education should be in line with the Local Districts because each of the assistant superintendents, in fact, do supervise the day-to-day operations of schools and evaluate their principals.
- **There is no need for two offices with secondary assistant superintendents.** Also, shall we assume that the Options Program Office is under the supervision of the secondary assistant superintendent for instructional support while the schools are under the local district superintendents? This line staff relationship needs to be better defined.
- **The Innovation Division is at best redundant and should be eliminated as part of the District's budget reductions. All schools regardless of uniqueness such as magnet, pilot, zone of choice, or even partnership, if found to be legal, should be under local district superintendents.**
- **The Organizational Support and Accountability Division is also redundant, and its elimination would also save District resources. Accountability is inherent throughout the organization through various institutional mechanisms such as Stull evaluations, classified evaluations, program quality reviews and, most importantly, accreditation through the Western Association of Schools and Colleges (WASC).**
- Change the title of the Educational Services person to Associate or Deputy Superintendent based upon an appropriate evaluation or need. Also, it seems to be a daunting task for one person to be in charge of Educational Services and Special Education at the same time.
- It is also recommended that there be a consistent use of position titles and office titles, but not a mix of position titles in some boxes and office titles in others.
- Four Dr. "Vacants" and four Mr. or Ms. "Interims" also remain on the chart.
- The Superintendent has added an Executive Officer to his staff; will this keep the District afloat or is this merely a rearranging of the deck chairs?

ALA is pleased that we finally have a Senior Deputy Superintendent so that our grievance procedure can now follow our contract which states that Step 3 will be heard by the Deputy Superintendent or designee. It is also heartening for the sake of due process that the person in that position is an educator with knowledge of the work of administrators in our schools.

This is a good start. We encourage the Superintendent to consider the recommendations listed above so that the 2008-2009 Organization Chart can go from "good to great!"

Associated Administrators of Los Angeles

Los Angeles Unified School District
2007-2008 Organization Chart
4-4-2008



* This organizational chart is current as of the day posted.

POSITIONS AVAILABLE

Minimum Qualifications: Candidates are responsible for making sure all the District requirements for administrative positions have been met. AALA is not responsible for errors in publication.

NOTE: Please do not contact AALA for information regarding administrative positions. Use the listed contact phone number, or contact LAUSD Human Resources Division at 213.241.6886 or via e-mail at http://certificated.lausd.k12.ca.us/admin_vacancies.

PRINCIPAL, ELEMENTARY

Norwood Street School (7) MST 42, 2020 Oak Street, Los Angeles, CA 90007

Norwood is an E Basis school. For information and application procedures contact **Barbara Francois** Director, School Support Services, at 323.242.1300. **Filing deadline is 4:30 p.m., Friday, May 23, 2008.**

ASSISTANT PRINCIPAL, ELEMENTARY INSTRUCTIONAL SPECIALIST (EIS)

Fair Avenue School (2) MST 38, 6501 Fair Avenue, North Hollywood, CA 91606

Fair is a YR, 90/30 school. For information and application procedures contact **Mercedes Velazquez**, Director, School Services, at 818.755.5428. **Filing deadline EXTENDED TO Friday, May 9, 2008.**

Anatola Avenue School (1) MST 37, 7364 Anatola Avenue, Van Nuys, CA 91406

Anatola is a B Basis school. For information and application procedures contact **Cheryl Mueller**, Director, School Support Services, at 818.654.3614. **Filing deadline is Friday, May 9, 2008.**

PRINCIPAL, SECONDARY

Revere Charter Middle School (3) MST 44, 1450 Allenford Avenue, Los Angeles, CA 90049

Revere is a B Basis school. For information and application procedures contact **Kavin Dotson**, Director, Middle School Services, at 310.253.7156. **Filing deadline is Tuesday, May 13, 2008.**

ASSISTANT PRINCIPAL, SECONDARY

Bret Harte Middle School (8) MST 39, 9301 S. Hoover Street, Los Angeles, CA 90044

Bret Harte is a B Basis school. For information and application procedures contact **Shannon Lee**, Director, Middle School Services, at 310.354.3400. **Filing deadline EXTENDED TO Friday, May 9, 2008.**

ASSISTANT PRINCIPAL, SECONDARY COUNSELING SERVICES (SCS)

Nobel Middle School (1) MST 39, 9950 Tampa Avenue, Northridge, CA 91324

Nobel is a B Basis school. For information and application procedures contact **Lynda Schwarz**, Director, Secondary School Services, at 818.654.3644. **Filing deadline is Wednesday, May 14, 2008.**

POSITIONS AVAILABLE (Continued)

SPECIALIST, NUTRITION NETWORK (MST 34, A Basis)

Health Education Programs, 333 S. Beaudry Ave., 29th Fl., Los Angeles, CA 90017 213.241.2689
 Responsibilities include assisting in the facilitation of activities associated with the development, preparation, or revision of annual scope of work and budget proposal necessary to obtain funding for the grant. Requires 5 years of successful full-time public school experience and ability to travel. For information and application procedures contact **Lori Vollandt**, Coordinator. **Filing deadline is Friday, May 16, 2008.**

SPECIALIST, SECONDARY MATHEMATICS (Temp. Adv., MST 38, A Basis)

Local District 6, 5800 S. Eastern Avenue, Commerce, CA 90040 323.278.3900
 Responsibilities include assisting in the implementation of the LAUSD Mathematics Plan including the Instructional Guides, the Periodic Assessments, and the utilization of the data to inform instruction and professional development. Requires 5 years of successful full-time certificated experience. For information and application procedures contact **Sharon Sweet**, Administrator of Instruction. **Filing deadline is Friday, May 9, 2008.**

PREVIOUSLY ANNOUNCED POSITIONS STILL AVAILABLE

Position	Location	Deadline	Contact
Principal, Elementary	Chapman School	05/09/08	310.354.3400
Principal, Elementary	15 th Street School	05/05/08	310.354.3400
Asst. Prin., EIS	Eshelman Avenue School	05/05/08	310.354.3400

DR. VERNA B. DAUTERIVE PRAISED FOR GENEROSITY

Dr. **Verna B. Dauterive**, one of the longest serving administrators in LAUSD history, was recently acknowledged in a *Los Angeles Times* article for her generous donation of \$25 million to the University of Southern California to restore part of the Doheny Library building as well as funding scholarships. This gift is in addition to previous gifts of about \$2 million that she and her late husband **Peter Dauterive** made to USC to fund scholarships for minority students pursuing doctorates in education. AALA is proud to count Dr. Dauterive as one of our retired associate members. Verna, thank you for your many years of service to LAUSD students and for your continued support for students in higher education. Fight On!

THE LOSS OF A LEADER

Dr. Dave Schwartz passed away on Saturday, April 26, 2008. Dave was a leader's leader, and throughout his life, he had a major impact on so many lives. His initial emergence as a leader occurred at Roosevelt High School where he excelled as a student and an athlete.

While at Roosevelt he served as Student Body Vice President and was selected as an Ephebian at graduation. After Roosevelt, he attended USC on an academic scholarship and graduated Phi Beta Kappa. He also earned All Pacific Coast Conference honors as a baseball star. He began his career with LAUSD as a teacher at Hollenbeck Junior High School (now Middle School), and from there, during his 37 year career, he advanced to high-ranking administrative positions in the District. He returned to USC and earned his Doctorate in Education in 1959. In addition to his career in education, Dave served in the USN as a Chief Petty Officer. Also, he was a 32nd Degree Mason Shriner and President of the Jewish Big Brothers.

Dave retired from LAUSD as an Associate Superintendent in 1974. Upon his retirement, he was employed as the Executive Secretary of Los Angeles Association of Secondary School Administrators (LAASSA) (the Secondary Department forerunner of AALA) from 1974 to 1981. In November 1981, he assumed the position of Co-Executive Director of AALA and held that position until May 1983. Dave achieved great things during his career, and he will always be remembered as someone who could guide administrators and staff through key decision-making situations while always exhibiting a wonderful sense of humor. He cared about the people he served, and he exemplified humanism and had a strong ability to discern the truth when difficult issues arose.

Sadie, Dave's loving wife of 66-1/2 years, and his son Bruce survive him. Dave will be missed, but he will always be remembered!

SAVE THE DATE

TUESDAY, MAY 20, 2008 – The City Terrace Coordinating Council Annual Awards Dinner will be held at Stevens Steak and Seafood House, 5332 Stevens Place, City of Commerce at 6:00 p.m. This year **Dr. Michael O'Sullivan** will receive the Special Recognition Award. Among other recipients are **Jean Batey** and **Sal Castro**. Join us there. The cost for this fundraiser is \$60 per person. For information call 323.261.8446.

NETWORK for a HEALTHY CALIFORNIA

Funding applications for the Network for a Healthy California—LAUSD program for the 2008/2009 school year are available at www.healthylausd.net. For information contact **Roberta Acantilado**, Project Director, Network for a Healthy California—LAUSD, 6651-C Balboa Blvd., Van Nuys, CA 91406.

Phone: (818) 609-2570 Fax: (818) 609-2580

CAL STATE, LOS ANGELES, TIER II PROGRAM

CSULA will customize the Tier II Program based on the needs of the candidate's current responsibilities. Candidate must have a contract with a district or equivalent as an administrator, a valid Preliminary Administrative Services (Tier I) Credential, and meet other regular Tier II admission requirements. Classes meet one evening per week at an off-campus site or online for 30 weeks from October to May. The cost is about \$800 per quarter. Contact the Division of Applied and Advanced Studies in Education at 323.343.4330 for an application package. Deadline for submitting applications is May 29, 2008. For more information visit <http://www.calstatela.edu/academic/edad/criteria.htm>.

IN MEMORIAM

FRANK ROBLES – Former Deputy Administrator, Child Development Division. Frank retired in March 1986, and passed away on April 10, 2008.

DR. EUGENE GREENFIELD – Former Director, Special Education. He retired on June 30, 1992, and passed away on April 24, 2008.

THE STATE BUDGET

Of the 50 states, California ranks 47th in educational funding. LAUSD serves 12 percent of the state's total enrollment, and under the Governor's proposed budget, LAUSD would lose \$460 million due to the suspension of Proposition 98. This could result in major layoffs, elimination of programs and/or reduction in salaries. The budget timeline is as follows:

March-April	Legislature conducted budget hearings
May 15	Governor releases revised budget reflecting actual state revenues
May 15-June 15	Legislature finalizes its work on the state budget
June 15	Legislature approves the state budget through a required two-thirds vote out of 80 (54) votes in the Assembly and 27 out of 40 votes in the Senate
June 15-June 30	Governor acts on budget, and he can eliminate or reduce funding from individual budget items (line-item veto)
July 1	State budget is effective (or date of enactment, if later)